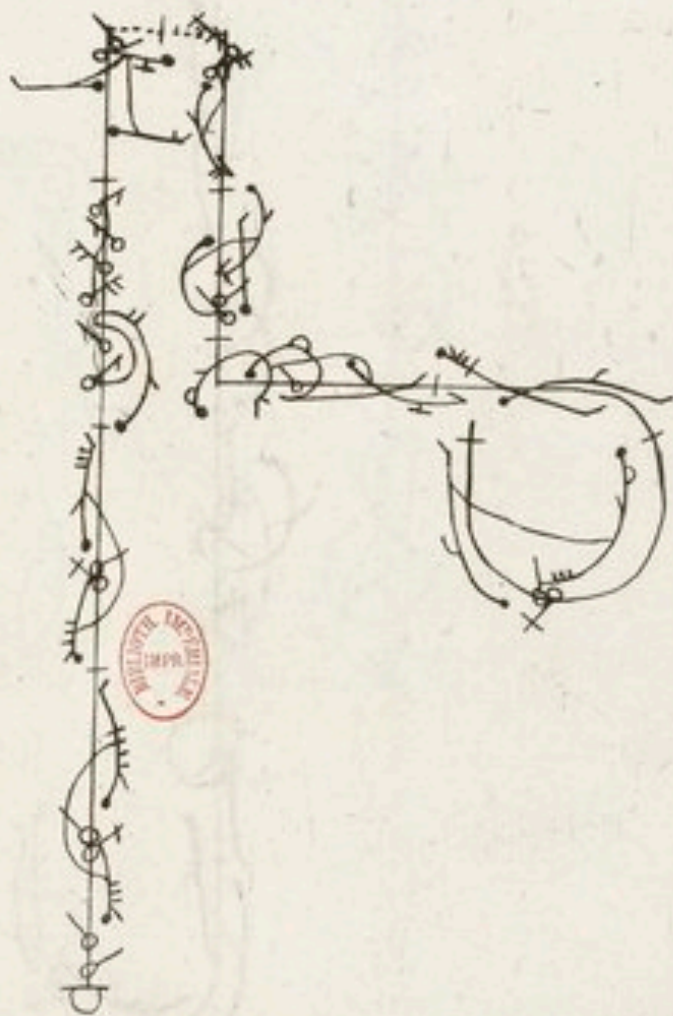
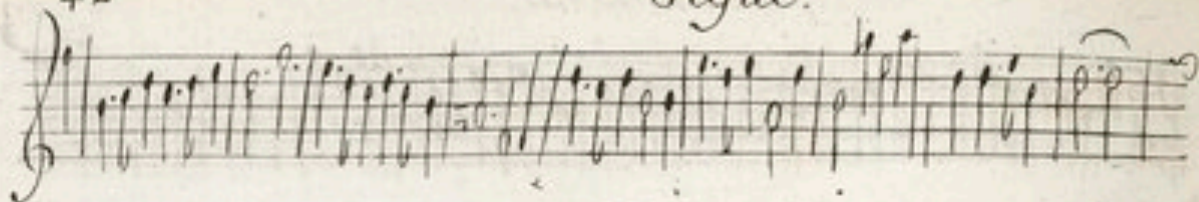


*Gigue pour homme .*



Gigue.



*pour homme*

43

Two staves of musical notation. The top staff is a treble clef with a key signature of one sharp (F#) and a 2/4 time signature. It contains a melodic line with various ornaments, including grace notes and mordents, and a fermata at the end. The bottom staff is a treble clef with a key signature of one sharp (F#) and a 2/4 time signature. It contains a rhythmic accompaniment with chords and eighth notes.

A large, highly decorative musical flourish or ornamentation piece. It features intricate scrollwork, flourishes, and a central circular stamp. The stamp is red and contains the text "MUSICAL INSTRUMENTS" around the perimeter and "LONDON" in the center. The flourish is written in a cursive, calligraphic style and is positioned below the main musical notation.

Gigue

44