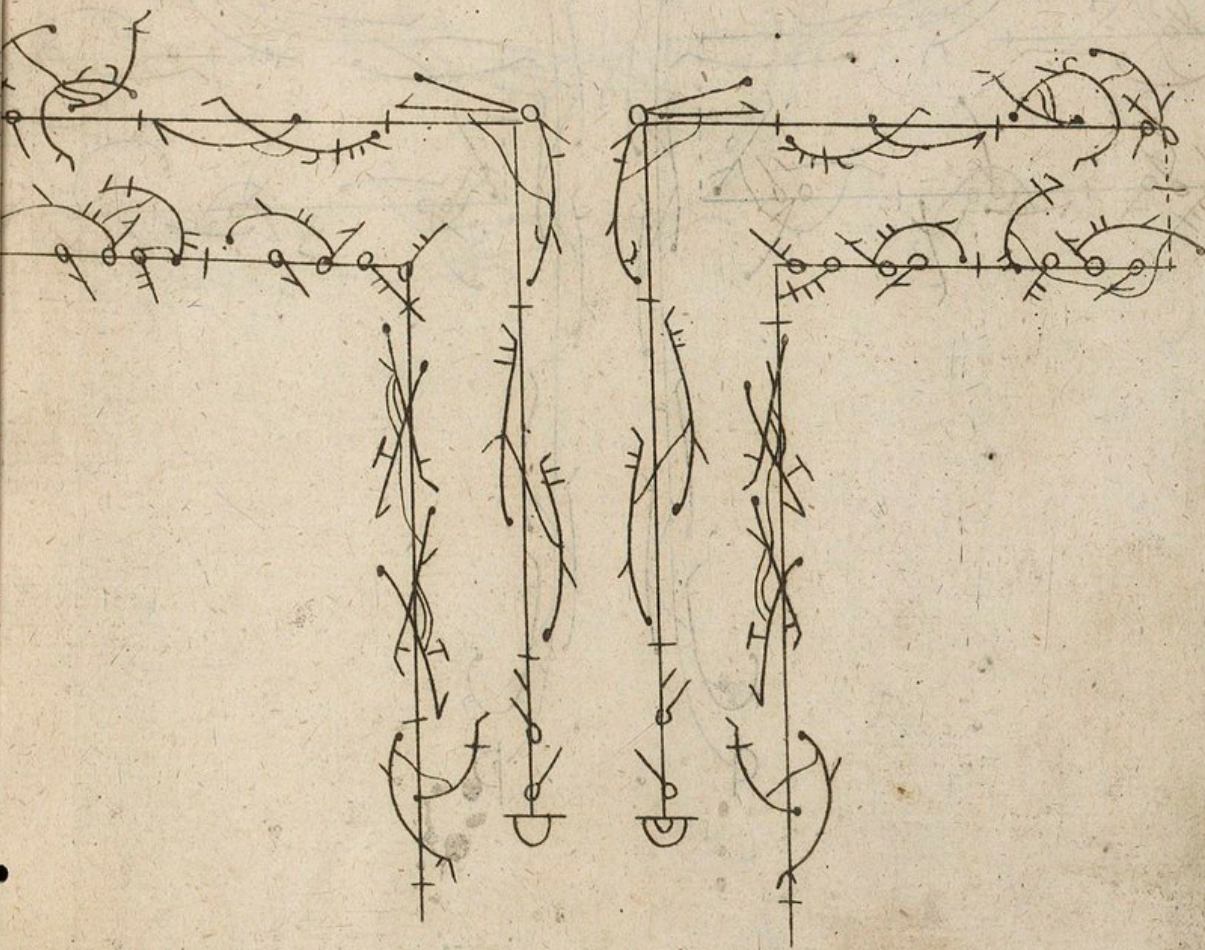


gayement



La Saltarelle



2

#

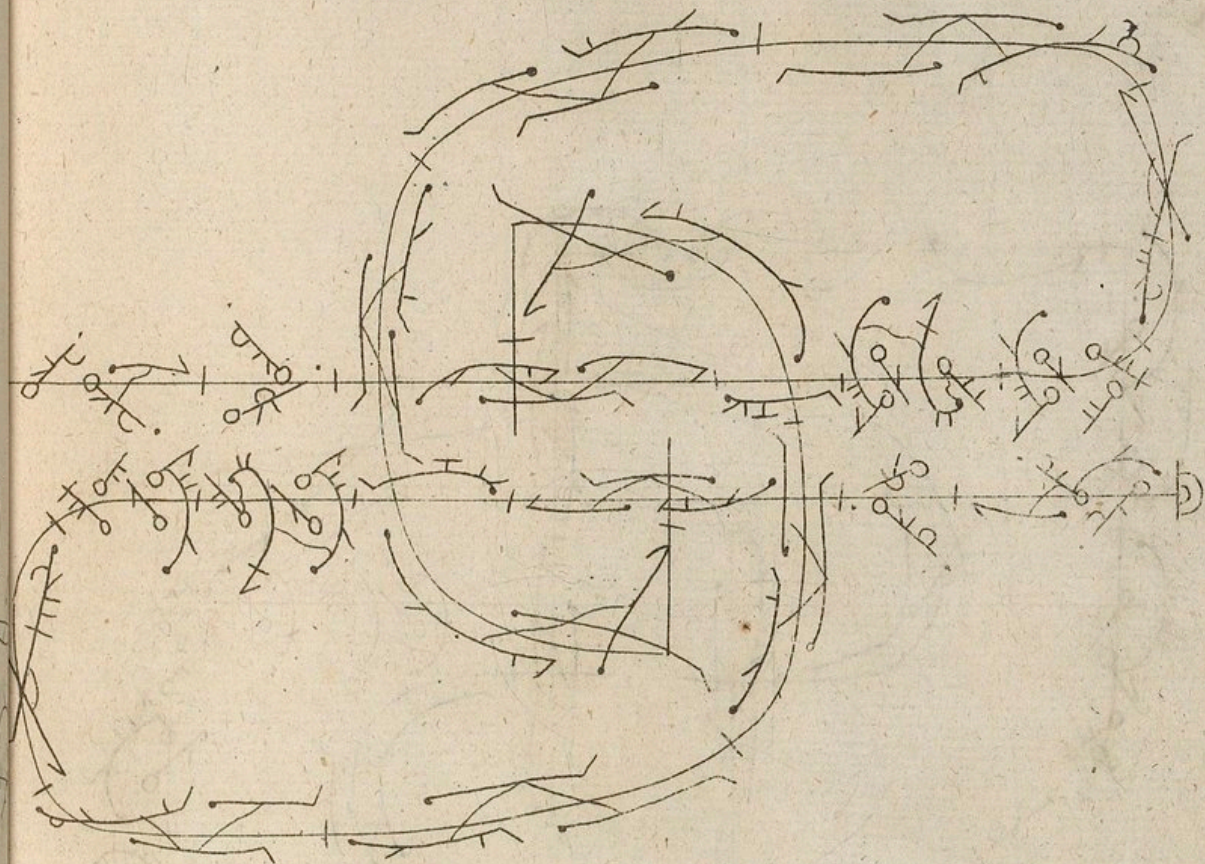
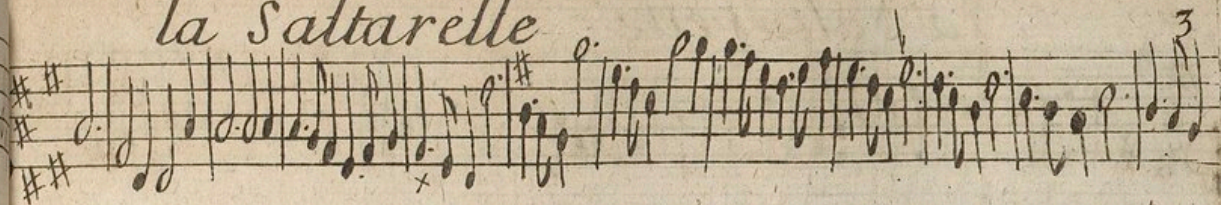
la Saltarelle

A single staff of handwritten musical notation. It begins with a treble clef, a key signature of two sharps (F# and C#), and a time signature of 2. The melody consists of a series of eighth and sixteenth notes, with some rests and a final fermata.

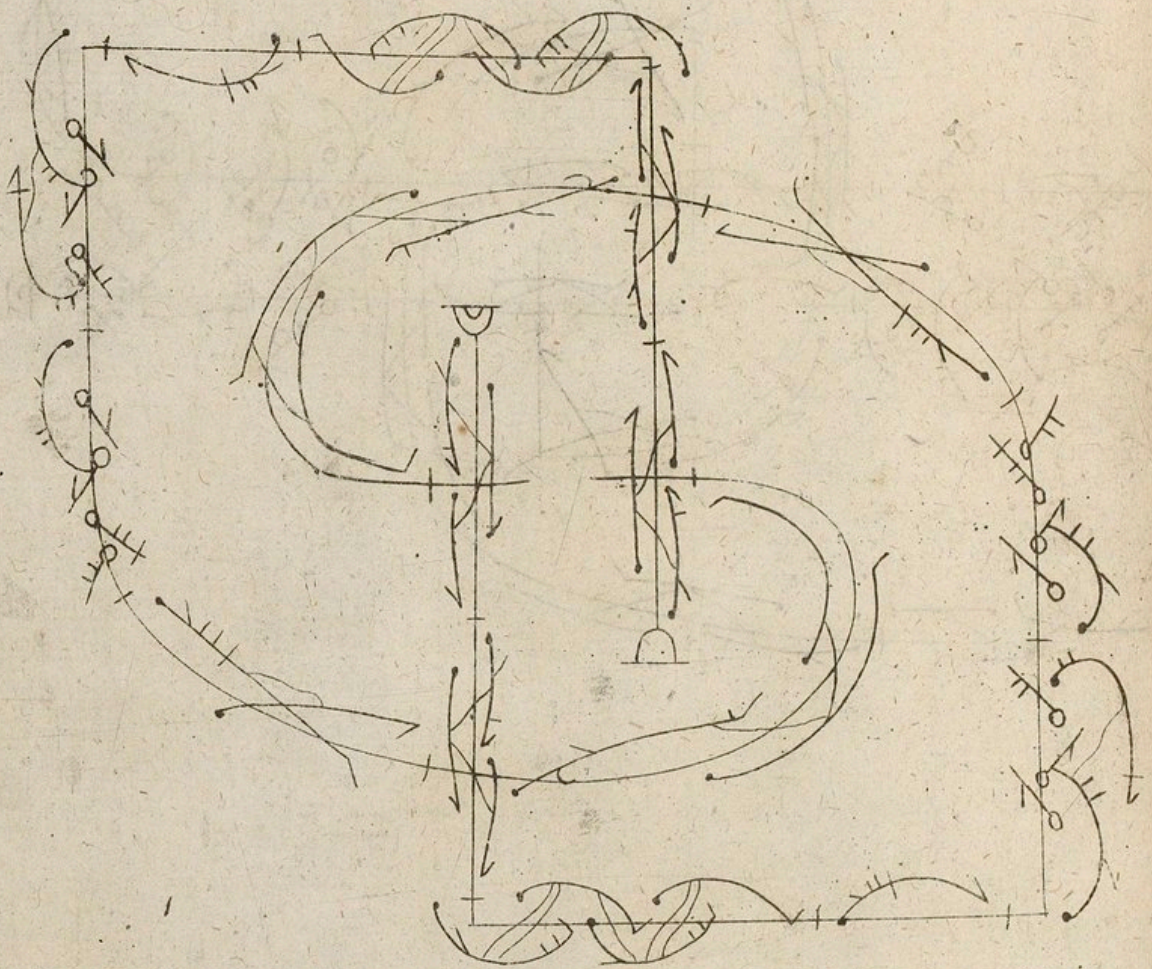
la Saltarelle

Two systems of handwritten musical notation, each consisting of two staves. The notation is highly decorative and complex, featuring large, sweeping loops and intricate rhythmic patterns. The first system is on the left, and the second is on the right. Both systems appear to be variations or continuations of the piece above, though the notation is more abstract and less clearly defined than the first system.

la Saltarelle

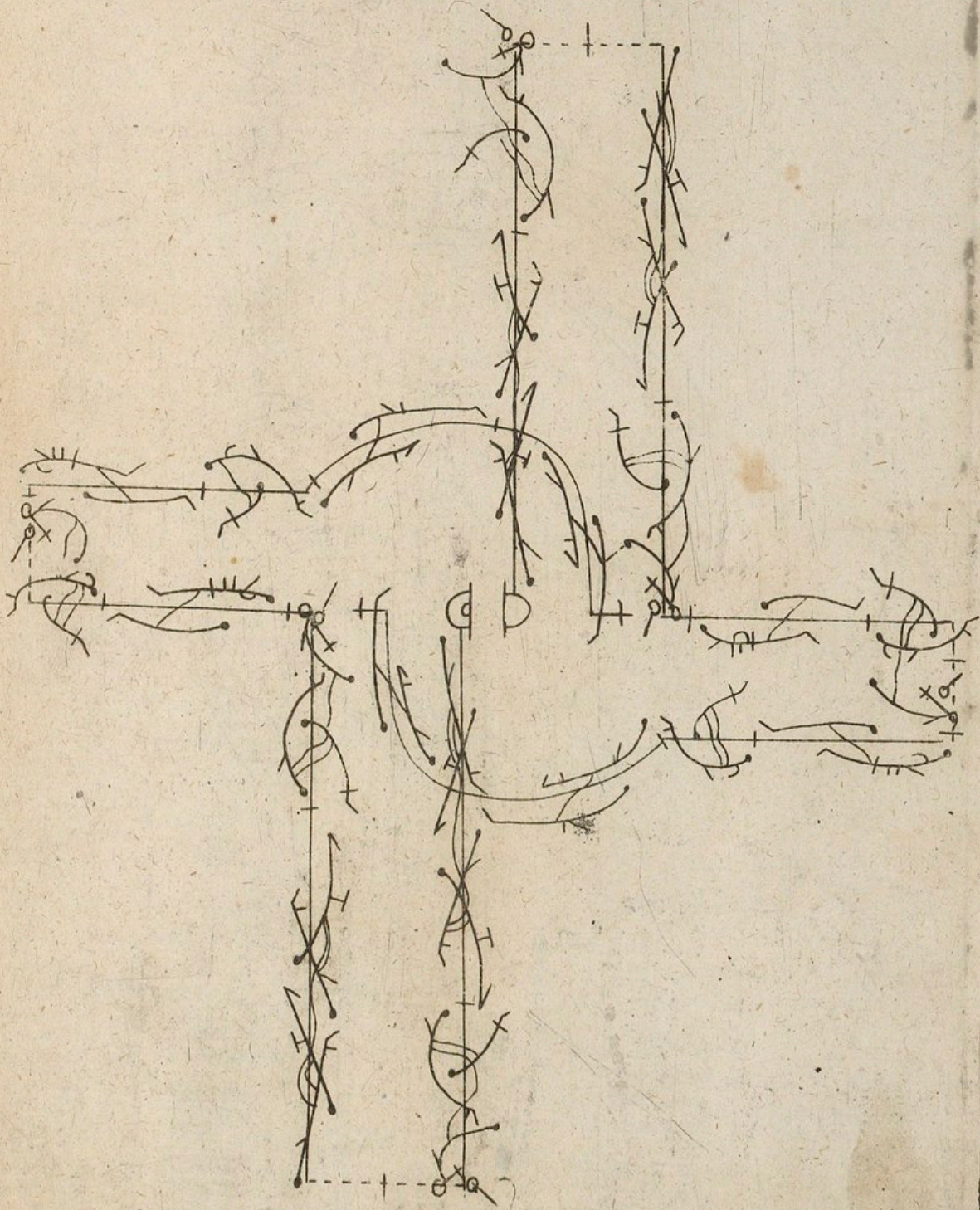
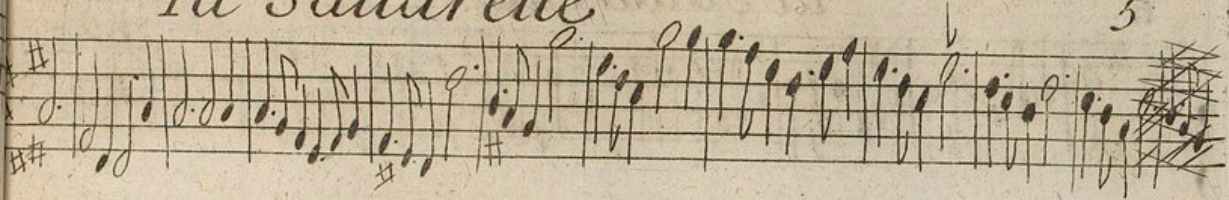


1a Saltarelle



1a Saltarelle

5



6

La Saltarelle

A single staff of music in treble clef with a key signature of two sharps (F# and C#). The notation consists of a series of eighth and sixteenth notes, forming a rhythmic melody. The staff ends with a small 'x' mark.

A large, intricate diagram consisting of several concentric circles and overlapping lines. The diagram is filled with musical notation, including notes, stems, and clefs, arranged in a circular pattern. It appears to be a complex rhythmic or melodic exercise, possibly a variation of the 'La Saltarelle' theme.

FIN.

Two short musical staves at the bottom of the page, each containing a few notes and stems. They appear to be the final notes of the piece.

La C...