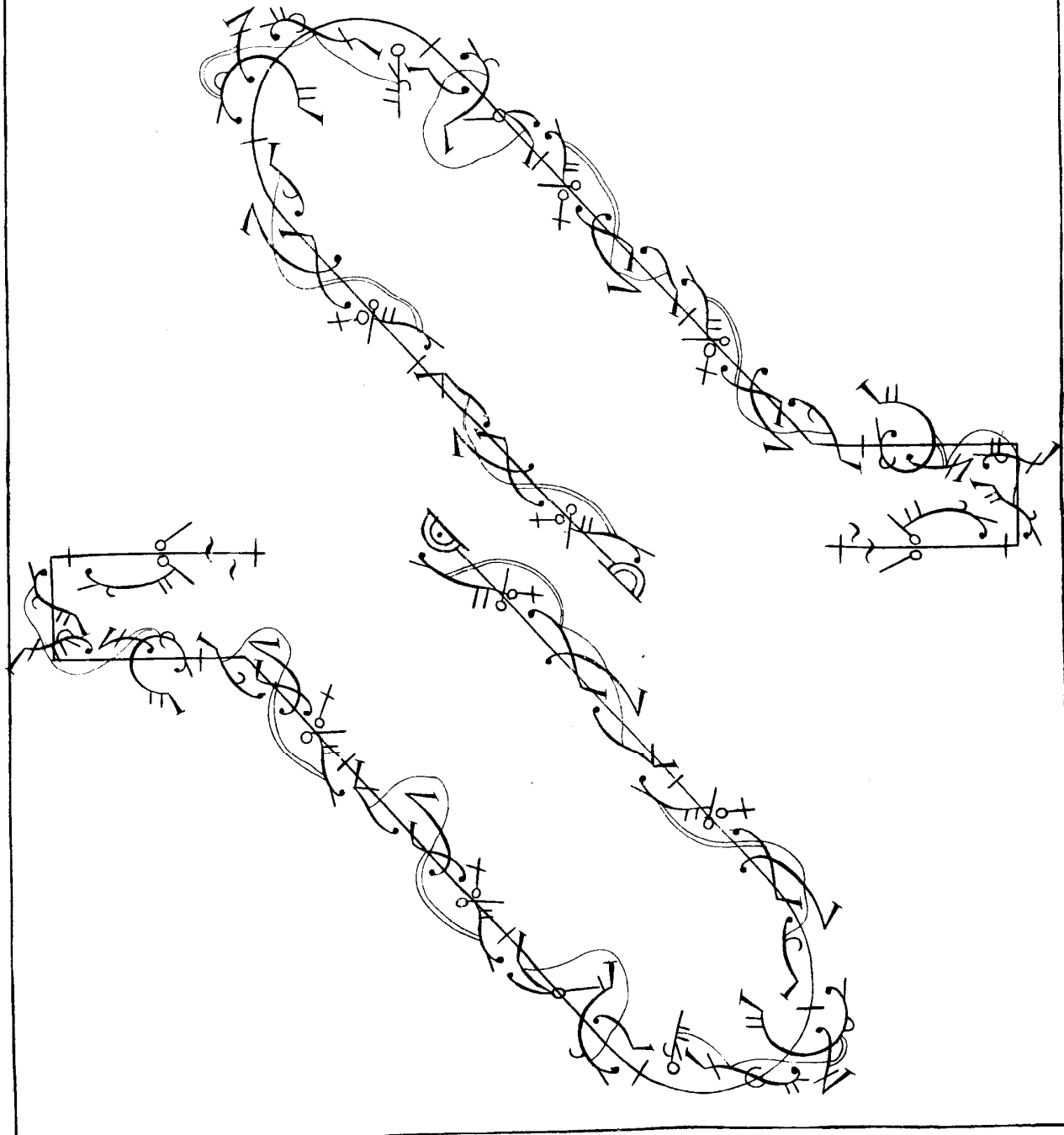
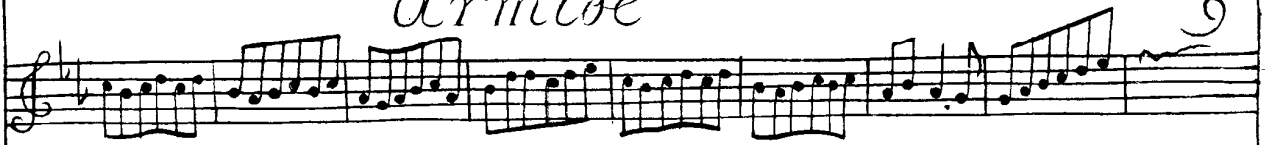


Pasacaille by m^{rs} Elford & of *Armide* m^{rs} Santlow

armide

The image displays a musical score for a piece titled "armide". The score is contained within a rectangular border and consists of several staves of music. At the top, there is a single staff with a treble clef and a key signature of one flat (B-flat). The notation includes various note values, rests, and dynamic markings. Below this, the score becomes highly complex and dense, with multiple staves overlapping and containing intricate musical notation, including many notes, rests, and symbols that are difficult to decipher. The overall appearance is that of a highly detailed and possibly experimental or avant-garde musical composition. The word "armide" is written in a cursive, italicized font at the top center of the page.

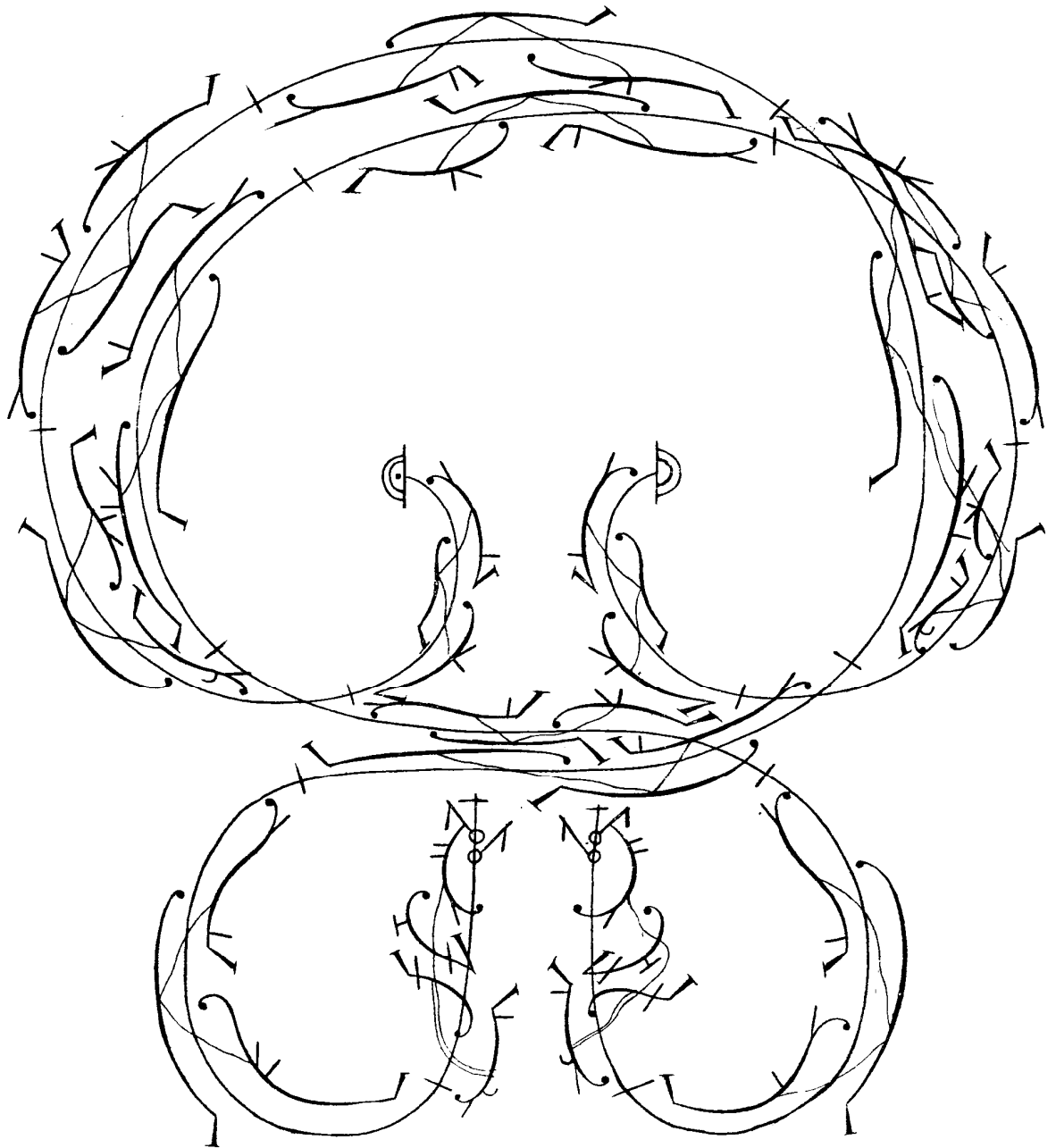
armide



Jo

armide

Jo



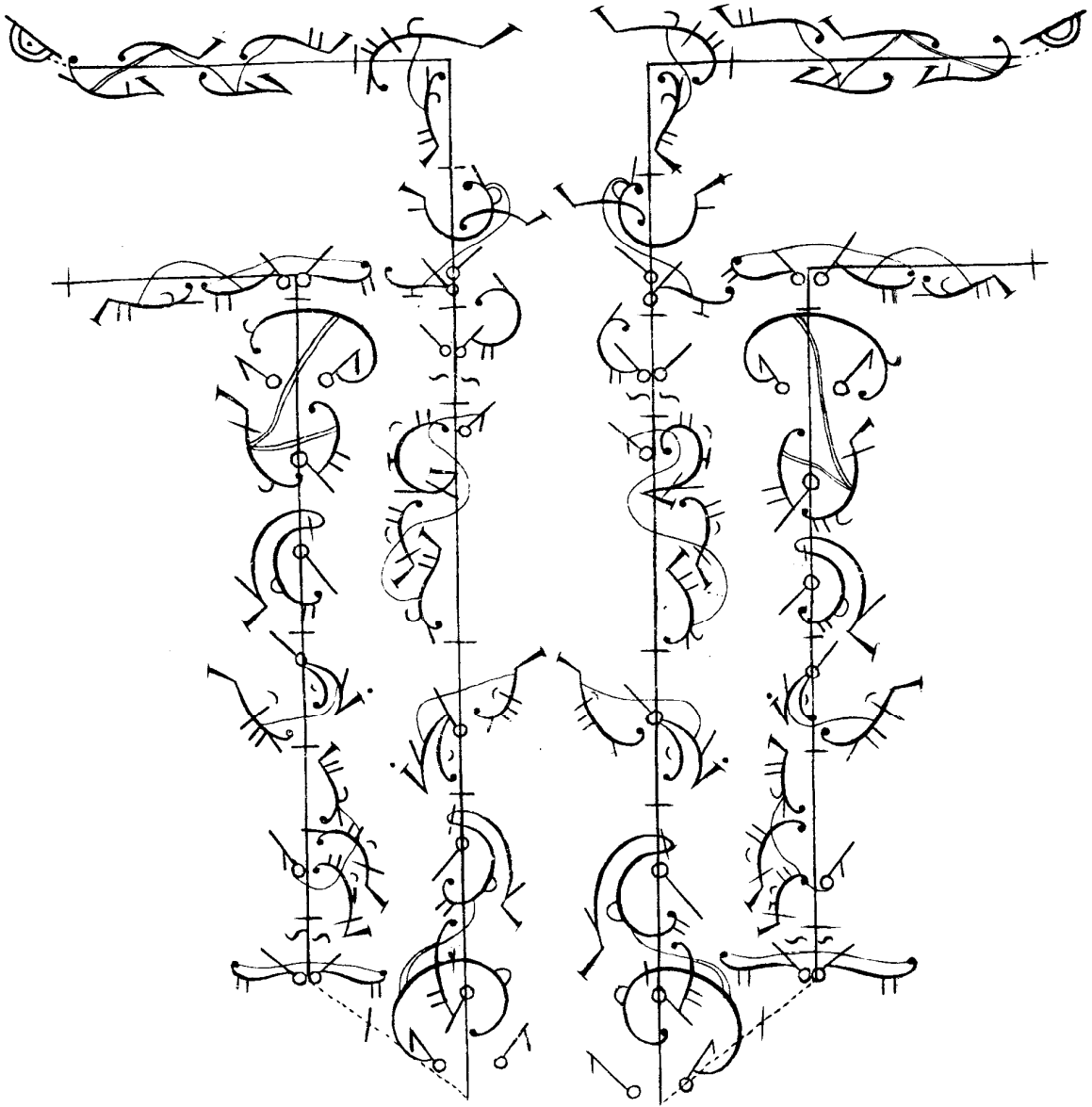
Armide

This image displays a musical score for the opera *Armide*. The score is presented in a highly decorative and artistic manner. At the top, the title "Armide" is written in a cursive script. Below the title, there are three horizontal staves of musical notation. The central focus of the page is a large, rectangular frame composed of intricate musical notation, including various note values, rests, and clefs, arranged in a complex, interlocking pattern. This frame is set against a background of more musical notation, which appears to be a continuation of the score. The overall style is reminiscent of early 20th-century musical manuscripts, emphasizing visual harmony and artistic expression.

12

Armide

12



Armide

13

Three staves of musical notation in treble clef, featuring a melodic line with eighth and sixteenth notes, and a more rhythmic accompaniment line with eighth notes and rests.

A large, intricate musical graphic or score fragment. It features a complex arrangement of musical notation, including staves, notes, and rests, arranged in a circular or semi-circular pattern. The notation is highly stylized and appears to be a continuation or a variation of the musical theme shown in the staves above. The overall composition is dense and visually striking, with a strong sense of movement and rhythm.

14 *Armide* 14

This musical score, titled "Armide", is presented on a page numbered "14" at both the top left and top right. The score is enclosed in a rectangular border. At the top, a single staff of music contains a melodic line. Below this, the central focus is a circular arrangement of musical notation. This arrangement consists of a horizontal staff in the middle, with musical notes and clefs extending outwards to form a large circle. The notation is highly stylized and intricate, featuring various note values, clefs, and decorative flourishes. The overall layout is symmetrical and visually complex, typical of early 20th-century musical notation.

armide

15

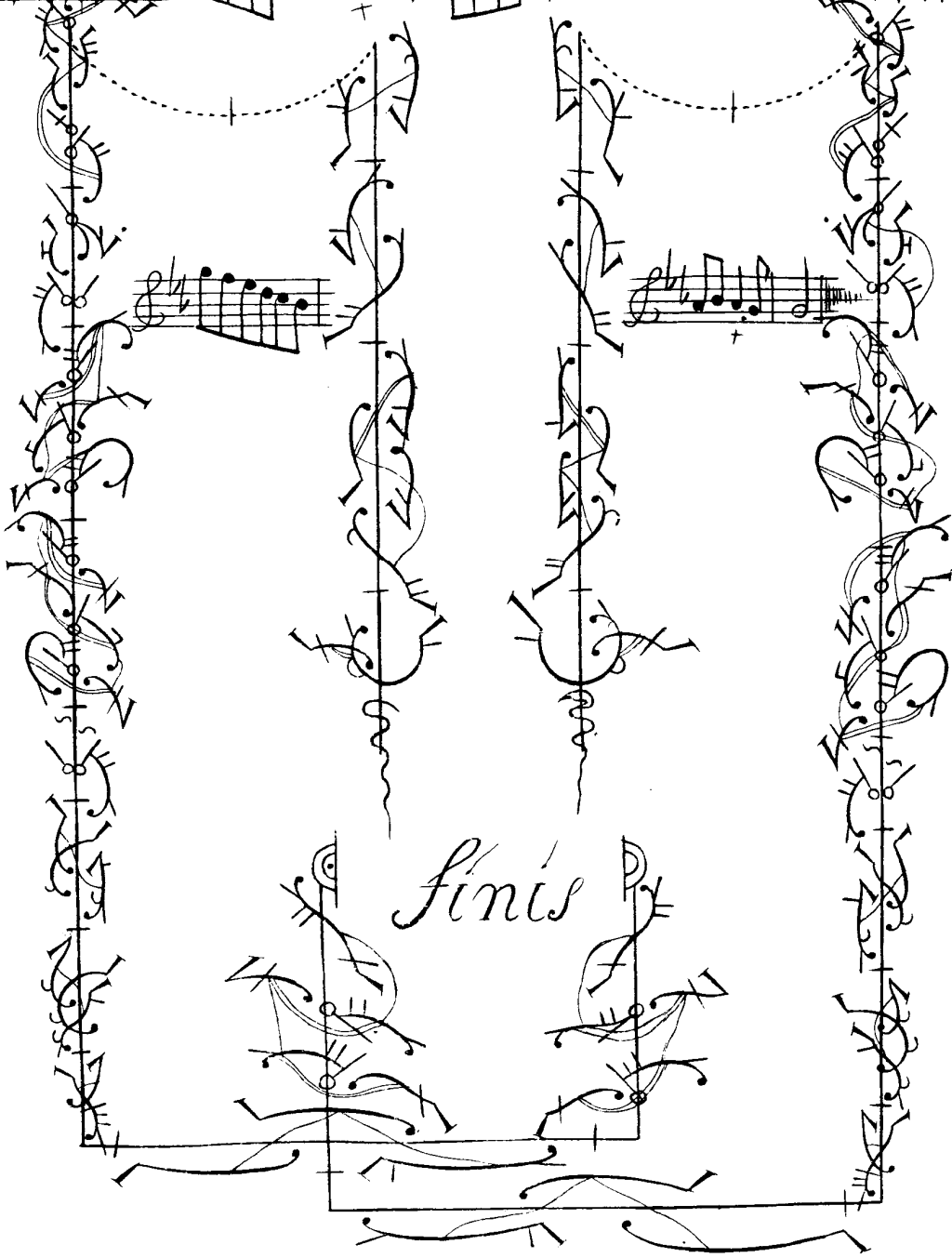
Two staves of musical notation. The top staff begins with a treble clef and a key signature of one flat. The bottom staff begins with a bass clef and a key signature of one flat. Both staves contain a sequence of notes, primarily eighth and sixteenth notes, with some rests.

A large, intricate musical score consisting of multiple staves. The notation is highly decorative and complex, featuring a variety of note heads, stems, and ornaments. The score is arranged in a somewhat circular or spiral pattern, with staves curving and overlapping. The notation includes many slurs, ties, and other musical symbols, creating a dense and visually complex composition.

16

Armide

16



Finis